

CALIFORNIA SCHOOL FOR THE DEAF RIVERSIDE
JUNE 12-16, 2007





June 9, 2017

Dear Participants,

Welcome to California School for the Deaf, Riverside! We are thrilled to host this year's National Student Life Conference for the Deaf and Hard of Hearing. We appreciate your commitment and dedication to Student Life, as well as your focus on ensuring each student's academic, social, physical, and emotional well-being.

Our student life division has a crucial role in fostering and nurturing the wholeness of every deaf student's well-being through different programs and activities. In today's high technology society, we are faced with more challenges as access to information becomes readily available, to our advantages and disadvantages. When it comes to negative impacts through social media, it has been you who creates and navigates different solutions for our students and staff.

This conference is an excellent way for all participants to share and develop different ideas and approaches to expand and strengthen our Student Life programs. We wish you a very successful conference in Riverside.

Thank you for all you do!

Best wishes,

Nancy Hlibok Amann, Ph.D.



CEASD
sends heartfelt wishes to
National Student Life
for the Deaf and
Hard of Hearing
for a productive and successful conference!

Sandra Edwards, Ed. D.
President

Barbara Raimondo, Esq.
Executive Director



Thank you, our sponsors!



Welcome to the National Student Life for Deaf and Hard of Hearing (NSLDHH) third bi-annual conference!

We, the NSLDHH committee members are delighted to have you here at California School for the Deaf Riverside (CSDR) where we can come together and promote a professional development network for individuals involved in Student Life programs through the exchanging of ideas, sharing best practices, and developing resources. None of this would have been possible without the strong commitment, support and belief of the importance of Student Life programs from the following people; Dr. Nancy Hilbok Amann, Edward Peigneux and his committee members, Deb Skjeveland, Russell West, Holly Bullard, Jeffery Bailey, and Kevin Boyce just to name few.

We, who work in the Student Life field are here to stay up to date with best practices and to look at what we can do to best fit the needs of the students we work with. No matter the number of students we serve, Student Life programs are much more successful when we are united and learn about each other's experiences, how we work with our students, what we are successful at, and what changes we are seeing that impact our staff and students.

Edward Peigneux and his committee members hope your stay is enjoyable and beneficial, one where we all develop valuable collaborations and build strong professional networks.

Frank Froehle
NSLDHH Organization Coordinator



MONDAY

3:00 – 5:00 p.m.

Registration

5:00 p.m. – 6:30 p.m.

*Conference Kick-Off
& Dinner*

Ethan Bernstein

FRIDAY

8:00 a.m.

Continental Breakfast

10 a.m. *Check Out*

CONTACT:

Erica Hossler (Point of Contact)

239-223-0979

CSDR Security (Emergency):

909-721-3854

TUESDAY

8:00 a.m. *Breakfast*

9:00 – 10 a.m.

Teambuilding activity

10-11:15 a.m.

Session I:

Emerging and (Disappearing) Leaders

Scott Keller

12-1p.m. *Lunch*

1:15 – 2:30 p.m.

*Session 2: Reading and ASL Literacy
Beyond Classroom*

Dr. Nancy Hlibok Amann

2:30 – 2:45 p.m. *Break*

2:45 – 4:00 p.m.

*Session 3: Student Organizations and
Events Communication Center*

Mike Anderson

4:30pm:

Depart for Huntington Beach

Dinner on your own

WORKSHOP SESSIONS

PAWS

Ed Peigneux

Positive Attitudes Will Succeed (PAWS) is based on the Boy Town Education Model. The program emphasizes relationship building, proactive, practice and social skill instruction to empower students with self-management skills.

Ways to Make the Workplace a Happy Environment

Holly Bullard

...is about how to improve your workplace. Changing it from a toxic environment to a productive and happy environment where you want to come to work everyday than dreading to come to work everyday. This is all about your mindset and to find the areas that needs improvement and how to work with people that may have different agendas. Points will cover: Find Ways to Say Yes, Volunteering Perspective, Know Their Story, and more.

games **LIFE** grow learn fun
STUDENT skills language connect
ASL laugh relationships thrive
social experience
dorm **DEAF**

WORKSHOP SESSIONS

Approaches to Mental Health in After School Programs

Noel King

When students experience mental health challenges, “see a school counselor tomorrow and share how you feel during therapy.” is a common suggestion during after school hour at dormitory. For those who are in school residential and experience mental health issues, how do viable mental health services offer? This workshop will be led by Noel King, art therapist/behavioral health therapist from Deaf Community Services of San Diego (DCS), who will illuminate the differences between students’ backgrounds: cultural, family, and socioeconomic, and the consequences on mental health that occur when the latter fails to understand and support the dignity and rights of the former. It will be discussed how to recognize and handle the mental health crisis situations. This presentation is intended to provide the support system for students who are experiencing mental health challenges during after school hour.



Space Matters: Creating a Safe Space for LGBTQ Students

Larissa Clapp, Blake Culley and Bethany Gehman

This workshop will focus on HOW to create affirming & safe space for Deaf students on campus. I will discuss the 'typical' coming out process and how staff can better support them. Through staff's support, students will have opportunity to learn coping skills to deal with their coming out journey and external homophobia & transphobia. Often LGBTQ+ students react inappropriately in situations because they did not have an opportunity to learn coping skills. Often, they suffer more as they are being punished for their misbehaviors rather than being taught how to respond/defend appropriately. This will occur after Blake and Larissa's LGBTQ+ 101 workshop for participants to understand LGBTQ+ terminology and culture.

WEDNESDAY

8:00 a.m. *Breakfast*

9-10 a.m.

***PANEL: Student Life
Trends & Issues***

10 – 10:45 a.m.

***Strategies for After School Activities/
Programs: Roundtable Discussion***

10:45-11 a.m. *Break*

11-12 p.m.

***Session 4:
Beyond Respect: Moving Toward an
Integrated Approach to Consent &
Healthy Boundaries***
Bethany Gehman

12-1 p.m. *Lunch*

1- 2:15 p.m.

***Session 5:
Approaches to mental health in after
school programs***
Noel King

2:15 – 2:30 p.m. *Break*

2:30 – 4 p.m.

***Session 6: Space Matters – Creating a
Safe Space for LGBTQ Students***
*Bethany Gehman &
Blake Culley & Larissa Clapp*

4pm-5pm: *Open discussion*

Dinner on your own

THURSDAY

8:00 a.m. *Breakfast*

9-10:15am

Session 7: PAWS
Ed Peigneux

10:15-10:30 a.m. *Break*

10:30 – 11:45 a.m.

***Session 8: Ways to Make the
Workplace a Happy Environment***
Holly Bullard

12-1pm: *Lunch*

1-2:30pm

General Meeting

2:30– 5 p.m. *Break/Pack*

5– 8p.m.

***Closing Ceremony
& Dinner at Mission Inn in
Downtown Riverside***
Deb Skjeveland

KNOW THY COTTAGE



SHASTA 2 & 3: WOMEN

LASSEN 2: MEN

PALOMAR 2: MEN

RUBIDOUX 1 & 2: WORKSHOP SESSIONS

PACHAPPA 1: WHERE YOU EAT



MEAL SCHEDULE

	Tuesday	Wednesday	Thursday	Friday
Breakfast	Continental breakfast	Hot breakfast	Hot breakfast	Continental breakfast
Lunch	Tacos	Lasagna & salad	Deli Sandwiches	
Dinner	On your own at Huntington Beach	On your own at Riverside Plaza	Banquet at Mission Inn Hotel	

*See Antonia Clark or Wendy Korn if you have any question

WORKSHOP SESSIONS

PANEL/ROUNDTABLE

Erica Hossler & Frank Froehle

This panel and roundtable discussion will talk about different issues & trends in Student Life programs through exchanging ideas, sharing best practices and developing resources.

inspire:

To fill (someone) with the urge or ability to do or feel something, especially to do something creative.

thrive:

To grow or develop well or vigorously.

www.dictionary.com



Beyond Respect: Moving Toward an Integrated Approach to Consent and Healthy Boundaries

Bethany Gehman

This workshop will teach staff how to incorporate the teaching of consent and maintaining healthy boundaries in their daily interactions with students in dorms. This tool is essential for students to obtain in order to develop healthy relationships with themselves and others. In the workshop, we will take a deep look at the true definition of respect and how it cannot be achieved without consent and boundaries. I will also provide staff some of useful resources to share with their teams. This workshop is ideal for Tuesday before any LGBTQ+ workshop as participants will develop a better understanding of respect and valuing students as human beings for students to thrive at their schools.

WORKSHOP SESSIONS

Emerging and (Disappearing) Leaders

Scott Keller

In light of the peculiar climate we find ourselves in, it is suddenly ever so important that we recognize and enhance our leaders of tomorrow. One would say it is extremely easy to recognize leaders amongst a population, but is it easy to recognize disappearing leaders? Is it also possible to recognize leaders that are emerging? This workshop will discuss the frameworks of leadership and how one can connect it with our emerging and disappearing leaders of tomorrow.

Reading and ASL Literacy Beyond Classroom

Nancy Hlibok Amann, Ph.D

Do you find yourself struggling to motivate students to read independently? Do you want to learn how to bridge between ASL and printed English? If so, come to this workshop and learn all about what it takes to make a Deaf student a successful reader!

Student Organizations and Events Communication Center

Mike Anderson

‘Lousy food at the Cafeteria,’ ‘What if Earthquake alert didn’t work?’

“Textbooks too old, why not iPad?”

We get this kind of questions daily. Who makes the decision? High School Management Team meets every Tuesday after lunch. Who is on the High School Management Team? They are Student Life supervisors, Athletic Director, Activities Director, CTE Principal, HS Principal, Education Advisor, HS counselor (School Awareness), Office Assistant and Alternative Curriculum Education principal. We meet to review the daily schedules, assemblies, conflict resolution, suspension (for student officers), after school programs, sports, events, and invite student representative of any organization to give presentation on their behalf. This is about empowering the students and staff to work together in order to achieve in organizations and events.

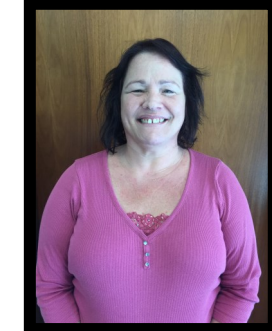
National Student Life Conference Committee



Ed Peigneux



Julie Reese



Kim Cheek



Antonia Clark
Meal & Housing



Katrina Velandres
Transportation



Alvin Chege
Logistics



Andy Bubeck
Transportation



Jayne Bustamante
Logistics



Michelle Skowzgid
Hospitality



Ida Dotson
Logistics



Nancy Moore
Banquet



Galvin Drake
Housing



Erica Hall
Housing



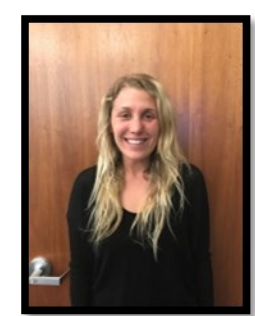
Wendy Korn
Meals



Carolyn Gomez
Entertainment



Patricia Heynen
Hospitality



Erica Hossler
Point Of Contact

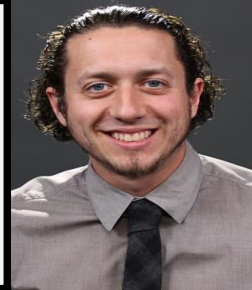
MEET OUR PRESENTERS

Ethan Bernstein is a proud alumnus of CSDR (1979). He earned Bachelor of Arts in History and Secondary Education at Gallaudet University in 1985 and Master of Arts in Communicative Handicapped (Deaf Education) at California State University of Northridge in 1987. He started teaching Social Studies at the California School for the Deaf, Fremont and taught for 12 years. He then became the High School Administrative Principal at the same school for 9 years before he assumed the duties of the Dean of Students, currently in his 9th year.



Deb Skjeveland grew up in New York and is an alumni of the Lexington School for the Deaf. She obtained her B.A. in Communication Arts from Gallaudet University then received a M.A. in Deaf Education from the University of Minnesota. She was the Director of Student Life at the Indiana School for the Deaf in Indiana and is now the Director of Student Life of Model Secondary School of the Deaf in Washington, D.C. She has been involved with Student Life for 18 years.

Scott Keller is a recent graduate from the University of San Diego's Masters in Leadership Studies program, has a Bachelors in Communications and English from Gallaudet University. Scott has been contributing all of his free time towards giving back to the community. Most recently, Scott is the Chair of the San Diego DeaFestival 2016 and 2017, and he is also a member of the Board of Directors of Disability Rights California. Scott enjoys people and making dreams into reality.



Nancy Hlibok Amann earned a Ph.D. in Language, Reading, and Culture from the University of Arizona. She received her M.S. in Administration and B.A. in Government from Gallaudet University, in Washington, D.C. Amann has over twenty years of experience as an educator for Deaf students. She previously worked as Assistant Superintendent of the Arizona State Schools for the Deaf and Blind. She supervised Student Life Programs a total of five years. For the community, Amann served as a co-chair for the Deaf Education Bilingual Teacher Training Program to foster collaboration and exchange of best practices.

Mike Anderson started his job at CSDR in Residential Life 26 years ago. Over the years, Mike has been very involved with Intramurals, leadership programs, coaching in several sports, multi-committees, task force ad-hoc, new facilities planning, and Crisis Prevention Institute trainings. Currently, Mike is an Activities Director for High School programs. Mike oversees 17+ organizations, frequent assemblies, and coordinates special communication projects including v-logs and posted calendar reminders to keep staff and students informed on school updates including events, highlights, and campus construction.



MEET OUR PRESENTERS

Bethany Gehman as a sexuality educator has more than four years of experience in providing sexual health education and professional training. Bethany provides sexuality education for people of all ages, conducts professional training, and promotes inclusive and comprehensive sexual health education in Deaf K-12 residential programs. Learn more about Bethany at www.bethanygehman.com.



Noel King leads colorful life as an art therapist and works for Deaf Community Services of San Diego (DCS). She had worked at a wide range of settings with clients from all walks of life. Noel has a passion to work with Deaf community to expanding their access to various therapy approaches, including art therapy.

My name is Blake Culley and I am a bonafide Californian, dudes! I am the only deaf member and one of two LGBTQIA members in my family. I transferred to a deaf school when I was a junior in HS. I completed studies for my bachelors, masters and specialist degree in psychology from Gallaudet University. I identify as an AFAB lesbian transmasculine person. My dream is that deaf school is a safe space for all LGBTQIA students.



Larissa Clapp grew up in Maryland. BA degree in psychology from Gallaudet in 2011. She worked at New Mexico for the Deaf as Student Life Educator between 2013-2015. She graduated from Gallaudet in May 2017 with MA in school counseling. Certified yoga instructor. Lifelong dreamer, doer, seeker, and learner.

Edward Peigneux is the Director of Student Life at California School for the Deaf— Riverside. He graduated in Montana School for the Deaf and Blind in 1989 then attended Gallaudet University. He has served as a Student Life staff from Gallaudet to ASDB to CSDR for almost 25 years. He enjoys being the father to 5 beautiful adopted children.



Holly Bullard is a Residence Education Manager for Model Secondary School for the Deaf, which is her alma mater. Coming from Gallaudet University, she has a M.S. in Leisure Service Administration with a certification in Management since 2011. Holly have applied her theories and practices from her graduate studies in all areas at work. She enjoys reading books in the sunroom as her two cats bask in the sun, being a freshwater fish keeper and go camping whenever she can.