

LGBTQIA Terminology 101

NSLDHH Conference 2017

Larissa Clapp
Blake Culley
June 14, 2017

Who Are We?

- Pronouns
- Identity
- Background
- Experience
- Why here today?

Sex

Biological sex- what doctors assign you at birth (i.e. Male, Female & Intersex)

Intersex- variety of conditions in which a person is born with a reproductive or sexual anatomy that doesn't seem to fit the typical definitions of female or male.

Gender

Gender - socially constructed roles and behaviors that a society typically associates with males and females

Cisgender - when a person feels that their assigned gender matches with their gender identity

Transgender- when a person feels that their assigned gender does NOT match with their gender identity

Binary - a concept or belief that there are only two genders and that one's biological or birth gender will align with traditional social constructs of masculine and feminine identity, expression, and sexuality.

Nonbinary - describes any gender identity which does not fit the male/ female, man/woman binary.

Gender identity - individual concept of self as male, female, a blend of both or neither – how individuals perceive themselves and what they call themselves; can be the same or different from their sex assigned at birth.

Gender expression - external appearance of one's gender identity and which may or may not conform to socially defined behaviors and characteristics typically associated with being either masculine or feminine.

Sexual Orientation

Sexual orientation - sexual attraction to other people

Heterosexual - when a person is attracted to their opposite sex

Lesbian - a woman who is sexually attracted to women

Gay - a man who is sexually attracted to men

Bisexual - when a person is attracted to men and women

Queer - an umbrella term for sexual and gender minorities who are not heterosexual or not cisgender

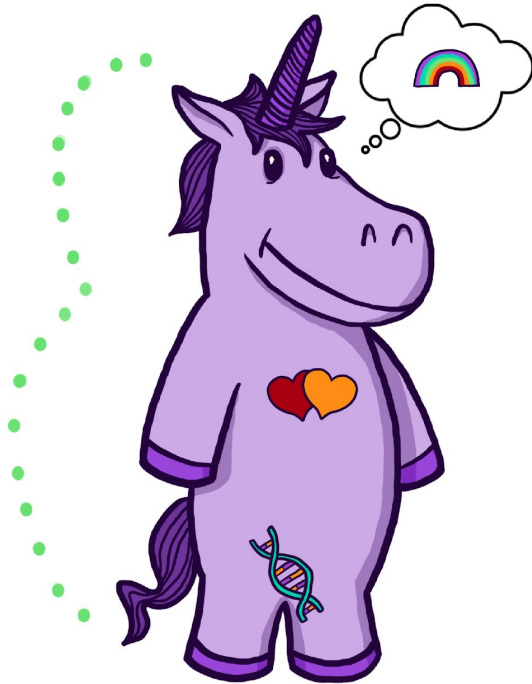
Questioning - a process of exploration by people who may be unsure, still exploring, and concerned about applying a social label to themselves

Asexual - a person that does not have any sexual feelings

Pansexual- not limited in sexual choice with regard to biological sex, gender, or gender identity

The Gender Unicorn

Graphic by:
TSER
Trans Student Educational Resources



To learn more, go to:
www.transstudent.org/gender

Design by Landyn Pan and Anna Moore

Raise your hand if...

- Any personal experience with LGBTQIA individuals in your student life program?
- Have any of you experienced some challenges in being a student life educator working with LGBTQIA student(s)?
- Have you felt like you wished you had more training, resources, support, etc. for working with LGBTQIA students?

Few Useful Links to Learn More LGBTQIA 101

- Links on Education, Resources, and Advocacy for Friends, Families, and School by UCLA LGBTQ resource Center
 - <http://www.lgbt.ucla.edu/LGBT101>
- Glossary of Terms by Human Rights Campaign (HRC)
 - <http://www.hrc.org/resources/glossary-of-terms>
- Terminology by LGBTQIA Healthcare Guild
 - <http://healthcareguild.com/terminology.html>

Take Away Message: It is better to ask and learn from your students instead of assuming to already know your students' sexual orientation and/or gender identity.