

Student Enterprise

By Uriel Torres

Student Activities Manager

Model Secondary School for the Deaf



















Does your school have a student-run business?

What kind of student-run business does your school have?

1. Printing products (e.g., media, digital, posters)
2. Catering
3. Recreation center
4. Other

What is Student Enterprise?

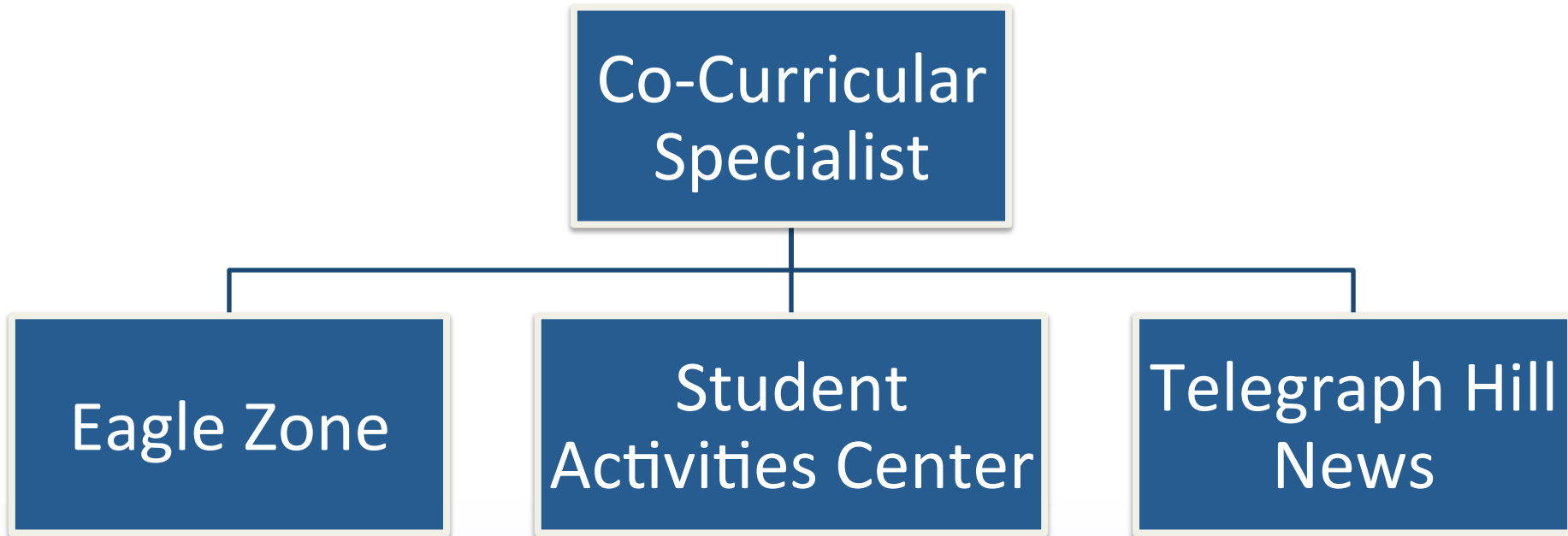
- Student-run businesses
- Job-training opportunities
- Designed to enhance community development and student personal growth
- Assists in developing skills in leadership and business management as well as a strong work ethic

What is Student Enterprise?

(continued)

- Student development theory
- Paid positions
- Supervised by co-curricular specialist and Student Life staff

Student Enterprise



Hiring Procedures

Qualifications:

- Four consecutive quarters
- Have and maintain a grade point average (GPA) of 2.5 or above
- No academic probation
- No major incident reports
- No disruptive behavior
- Good citizenship
- Good organizational and time management skills

Hiring Procedures

(continued)

Interview

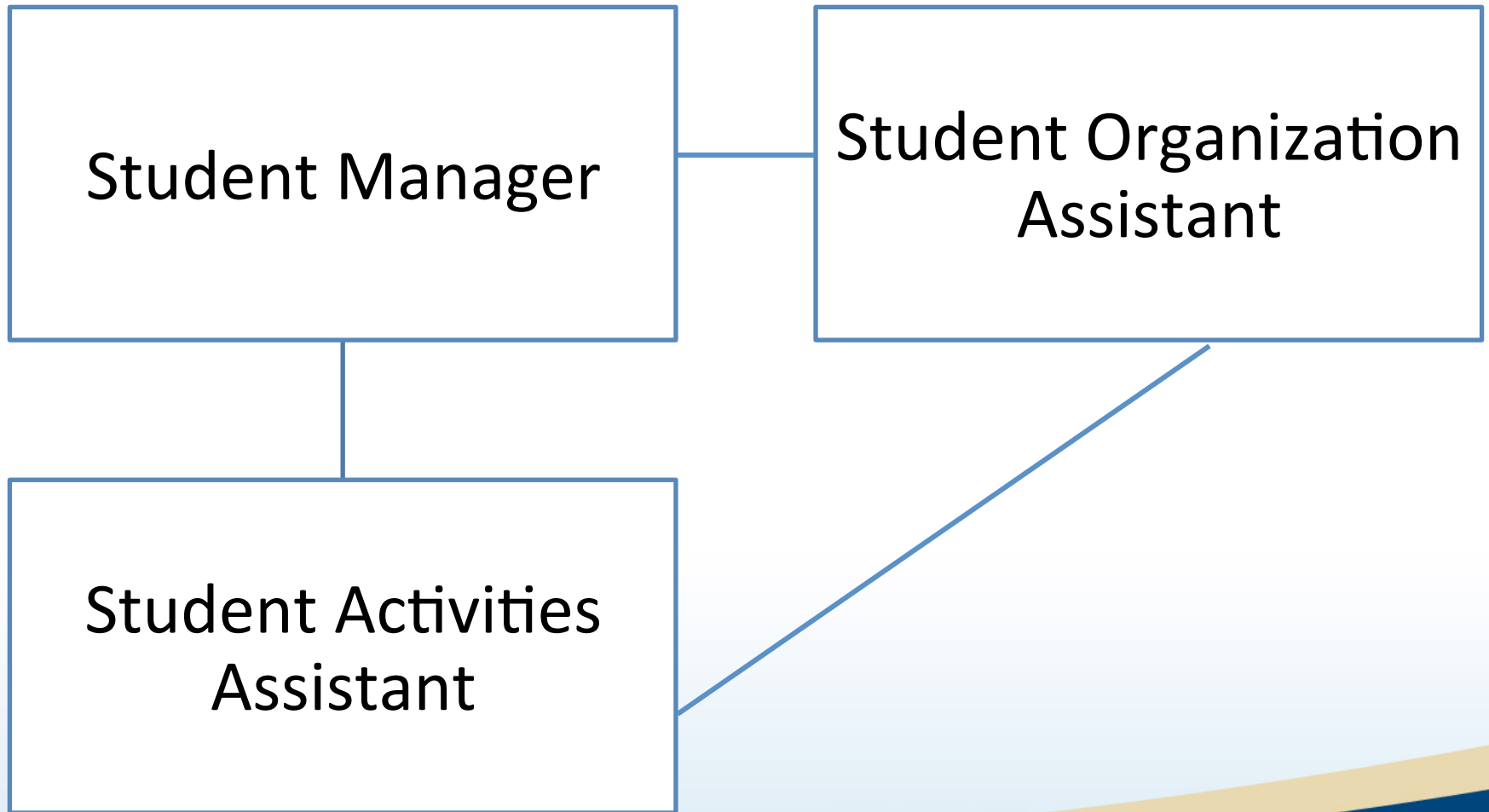
Paperwork

State minimum wage

Video Created by Eagle Zone Staff

<https://www.youtube.com/watch?v=pC3s8iPKwWk>

Roles and Responsibilities







Student Activities Center





Student Organization Assistant's Responsibilities

- Assists with the student organization training and workshop
- Student organization database
- Assists with event planning
- Coordinate Lottery Day
- Assist with the master calendar

Additional Responsibilities

- Monthly theme holiday event
- Weekend activities logistics
- Intramural programs
- Movie Night events

Telegraph Hill News

Positions and responsibilities :

- News editor
 - Prepare, rewrite, and edit copy
 - Develop story or content ideas
- Layout editor
 - Use a computer-assisted design program and software to assemble text, photographs, and other content

Student Employee Agreement Contract

- Attend meetings, training, and activities
- Punctuality
- Good academic standing
- Quarterly GPA of 2.5 and a 2.5 cumulative GPA
- Negligence of handling money as required may be grounds for dismissal from a position

Student Employee Agreement Contract (continued)

- Confidentiality
- Dress code attire
- Employment termination procedures
- Set an example and abide by the Student Code of Conduct

Requirements for Student Employees

- In-service trainings/retreats
- Weekly supervisory meetings
- Student employee agreement contract
- Quarterly student employee performance sheet

The hardest job you'll ever love!



Group Discussion

1. For those who have a student-run business, how was it implemented and by what resources was it funded?
2. Share your most challenging situations and how you approached them.
3. What kind of training programs do you have for your student employees?
4. Any other questions?

For More Information

- Clerc Center home page at <http://clerccenter.gallaudet.edu> or e-mail training.clerccenter@gallaudet.edu
- E-mail Luis.Torres@gallaudet.edu